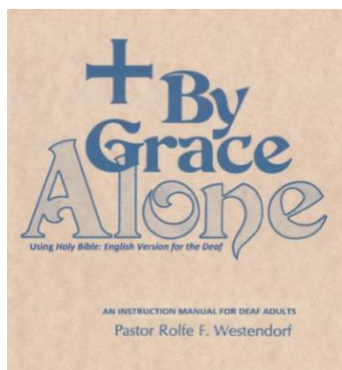




WELS Special Ministries District Updates Fall, 2022

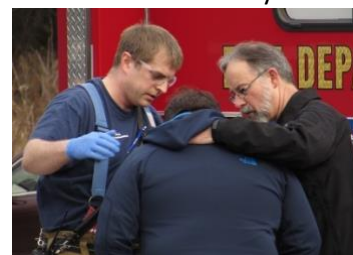
WE LISTEN AND CAN HELP Is someone in your church losing their eyesight? WELS Mission for the Visually Impaired (MVI) is happy to talk to them. At the heart of MVI are people who have already walked the path of vision loss and understand the challenges. Connect your visually impaired members with MVI (call 651-291-1536 or email welsvisimp@wels.net) – not just for MVI spiritual resources, but also for helpful insights and encouragements from WELS members who know what is possible with God’s help.

Pastors Conference opportunity: Effective Soul Care Partnership Special Ministries and WLCFS Christian Family Solutions have worked together to create a unique online learning opportunity involving counseling and the pastor. WELS ELS Christian Therapist Network (led by Prof. Em. Alan Siggelkow) offers a series of 90-minute online video presentations for WELS / ELS pastors and therapists addressing mental health topics. After a recorded presentation (discussion of a counseling case), pastors and therapists will have time to ask questions and discuss. Individual circuits may schedule their own Effective Soul Care Partnership session. Contact Angela Glaeske at Christian Family Solutions (aglaeske@wlcfs.org) to schedule a case study at a future circuit meeting or conference. See the WELS ELS Christian Therapists Network website for updated information (christiantherapistnetwork.com/wectn-effective-soul-care-partnership/)



Free special confirmation resources (deaf adults or persons with developmentally disabilities) The Mission for the Deaf and Hard of Hearing has used passages from *The Holy Bible: English Version for the Deaf* in Rolf Westendorf’s *By Grace Alone*. This manual should be used with a sign interpreter, a flow-through communicator who is not expected to do explaining. To order, email mdhh@wels.net. Pastor Joel Gaertner, chairman of the Commission on Special Ministries and National Director of Jesus Cares Ministries, has rewritten the old Special Ministries resource, *Confirming and Communing Someone with Developmental Disabilities*. He also has recommendations on confirmation materials to use. Contact Joel via email at jpgaertner@tlha.org.

Why Chaplain Certification? The partnership between Special Ministries and MLC that offers chaplaincy courses is not an abbreviated form of seminary training for pastoral ministry. What does chaplaincy offer (both to called workers and to lay members)? Chaplain training helps called workers and lay members navigate ministry in the public sector. A look ahead shows that in January 2023 MLC offers courses on “**Frontline Chaplaincy**” (such as military, police, fire department), “**A Scriptural Approach to Addictions Counseling**,” and for lay members, “**Grounded in Scripture**,” a study of Christian doctrine. Course content is focused on bringing the Word to people in the community. See wels.net/chaplain for more information. Financial aid and scholarships are available.



Also starting in January: MLC’s online course to learn American Sign Language and Deaf culture. See csm.welsrc.net/mdhh-resources-for-congregations/ Two WELS churches now offer worship that is signed for the deaf and streamed every week: St Paul, Lake Mills, WI, and Living Hope, Shakopee, MN. **Consider auto captioning your archived worship services for your hard of hearing members.**

What's the big deal about looping? Listen to what WELS members tell us: wels.net/mdhh.



It's the child in the pew in front of you – it's one of our students in your classroom. Abuse prevention is more than taking precautions to insure abuse doesn't happen on our property. Sometimes we learn that a child is being abused by someone they know. These children need our protection, too. Freedom for the Captives continues to expand our resources because we want to stop all abuse. We want WELS churches and schools to be safe havens for children, but that means we must be proactive. Be familiar with the resources on our website freedomforcaptives.com. If you're on Facebook, follow Freedom for the Captives to see our newest resources. Where can you find sample policies or speak to someone about a specific case in your congregation? Contact FFTC by email freedom@wels.net.



Holding Up the Prophet's Arms Core members of the congregation often would do more for called workers and their families if they had information and awareness. WELS Care Committee for Called Workers (CCCW) has resources to equip a committee of trusted members to care for those who devote their energies to the work of the church. A congregational president or chairman of elders can learn about this program at wels.net/CCCW.

School Mission Project / Special Sunday compassion resource Caring for others in their need – where do you find resources that cultivate concern for the lost? Prison Ministry has created new materials for prison ministry awareness – a full ChristianLight lesson (K-6, with teachers guide), preaching and worship resources for a Prison Ministry Sunday. See welscongregationalservices.net/compassion-ministry-modules.

Compassion Ministry Modules

Search the site ...



Online mentor training in October Also on the above Congregational Services website is a mentoring course for interested members who want to help people returning to the community from incarceration that anyone can view. However, training as a group can have a huge impact, so in October Prison Ministry offers group instruction using the online materials. For more information see wels.net/prison or email Dave.Hochmuth@wels.net.

What can you do for a military member? Engage with a military member's family. WELS Military Services strives to address the spiritual challenges of military life, but congregations can unite to help a military member or family in practical ways. Learn more at wels.net/military-support/ If a member of your church joins the military or is deployed, go to wels.net/refer. Help us provide spiritual resources developed for Christians carrying out their military vocation.



Parents of children who have disabilities or fragile health, who have been adopted or experienced other traumas, or who have other special needs, face unique challenges that are hard for others to fully understand. Find help at Light for Parents, WELS parents who carried this burden and now help other families. If you know such a family in your church, you can show extraordinary love in quiet ways. Learn more at lightforparents.com. And if you have a special needs child or adult in your congregation, sign them up to receive cards and letters through WELS "He Cares / We Care" program at wels.net/refer

What about the spouses of those who struggle with porn? Conquerors through Christ has grown a reputation for helping those who struggle, and now is developing resources for marriage partners hurt by the struggle. Find answers to questions in the Significant Others FAQ at conquerorsthroughchrist.net and if you want to partner in creating resources contact us at ctcnews.wels@gmail.com.